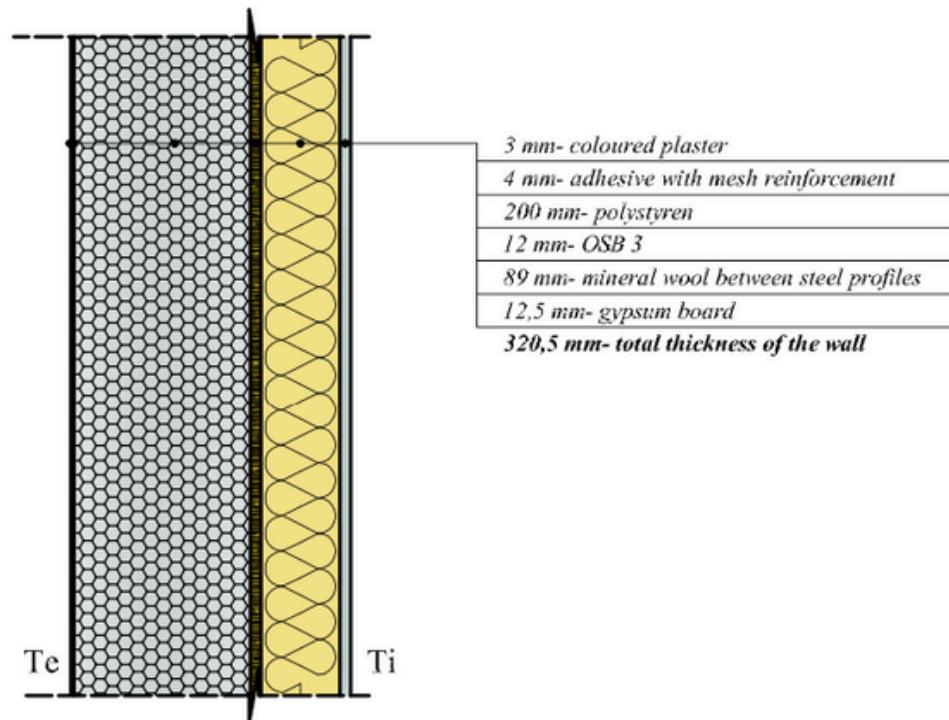


“Unic Rotarex® Ecotherm” wall



Exterior wall						
Nr. Crt.	Material	δ	λ	α	λ'	R
		[m]	[W/mK]	[–]	[W/mk]	[m ² K/W]
1	Gypsum board	0.012	0.37	1.0	0.37	0.033
2	Mineral wool between steel profiles	0.089	0.078	1.0	0.041	1.141
3	OSB 3	0.012	0.084	1.0	0.084	0.143
4	Polystyren	0.20	0.044	1.0	0.044	4.545
5	Adhesive with mesh reinforcement	0.004	0.7	1.0	0.7	0.006
5	Coloured plaster	0.003	0.7	1.0	0.7	0.004
TOTAL						5.872
$R_o=1/\alpha+R+1/\alpha_e$						6.039
Thermal transfer coefficient		$U=1/R_o=0.17$ W/m ² K				

C107-3/2005- Tab II
Mc001-P1- Tab. 5.3.2

- Light gauge steel profile, cold formed, made of galvanized steel sheet, straight section with “C” shape and cut edges.
- Type C12/41/89/12x1,0 - GK (SR EN 10162:2003)
- Galvanized steel DX51D + Z275 (EN 10346:2009)