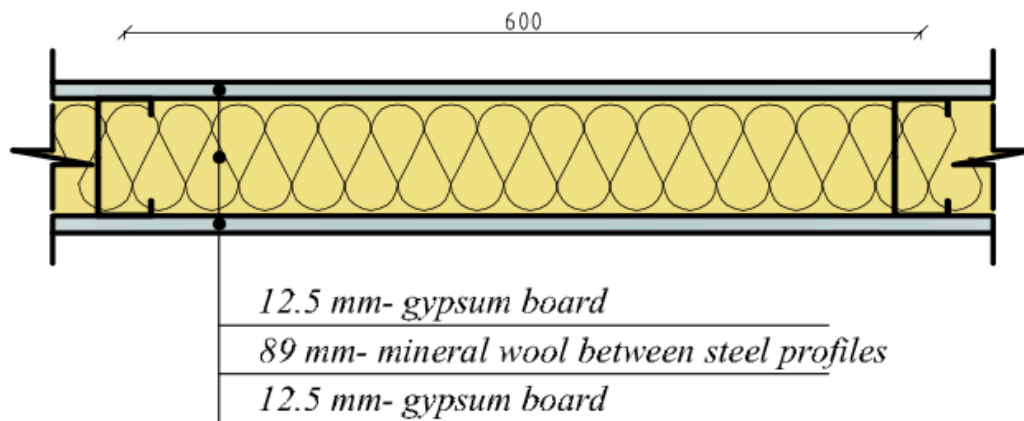


## Acoustic resistance

| <i>Interior wall,<br/>lightweight steel<br/>structure<br/>[one layer on each<br/>side]</i> | <i>Gypsum board with<br/>standard characteristics</i> | <i>Pianoboard Knauf</i> | <i>Silentboard Knauf</i> |
|--|---|-------------------------|--------------------------|
| <i>Board thickness [mm]</i>  | <i>12.5</i>   | <i>12.5</i>             | <i>12.5</i>              |
| <i>Wall thickness[mm]</i>  | <i>114</i>  | <i>114</i>              | <i>114</i>               |
| <i>Sound proofing<br/>R<sub>w,R</sub>[dB]</i>  | <i>45</i>   | <i>48</i>               | <i>58</i>                |



- C** Light gauge steel profile, cold formed, made of galvanized steel sheet, straight section with “C” shape and cut edges.  
Type C12/41/89/12x1,0 - GK (SR EN 10162:2003)  
Galvanized steel DX51D + Z275 (EN 10346:2009)