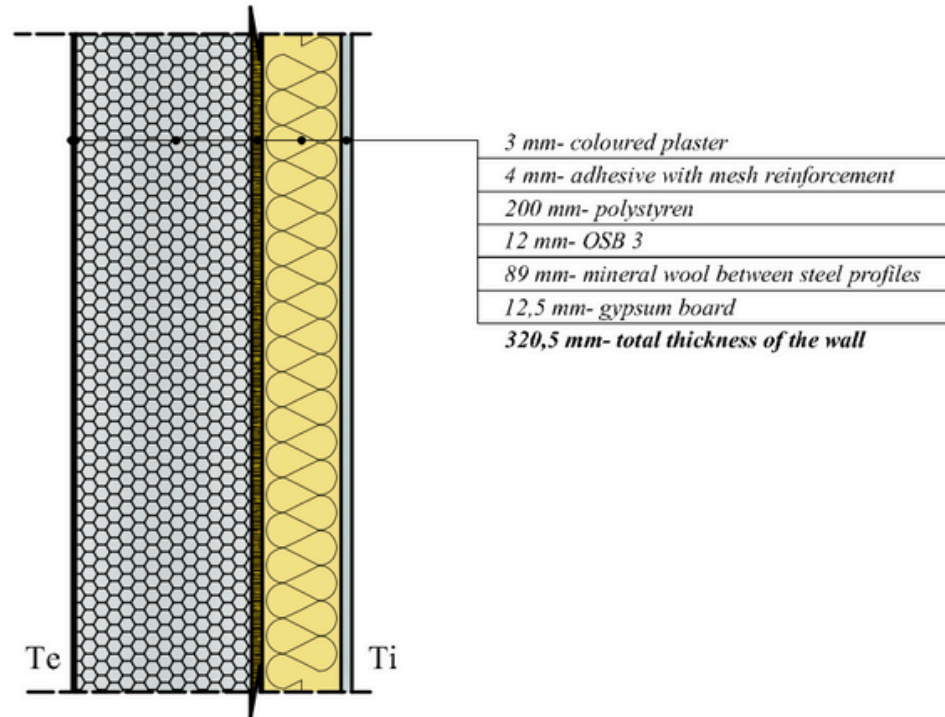


## “Unic Rotarex® 200 Dalmatina” wall



Exterior Caparol Dalmatina wall						
Nr. Crt.	Material	$\delta$	$\lambda$	$\alpha$	$\lambda'$	R
		[m]	[W/mK]	[-]	[W/mk]	[m <sup>2</sup> K/W]
1	Gypsum board	0.012	0.37	1.0	0.37	0.033
2	Mineral wool between steel profiles	0.089	0.078	1.0	0.041	1.141
3	OSB 3	0.012	0.084	1.0	0.084	0.143
4	Polystyren	0.20	0.033	1.0	0.044	6.060
5	Adhesive with mesh reinforcement	0.004	0.7	1.0	0.7	0.006
5	Coloured plaster	0.003	0.7	1.0	0.7	0.004
<i>TOTAL</i>						7.257
$R_o=1/\alpha_i+R+1/\alpha_e$						7.424
<i>Thermal transfer coefficient</i>		$U=1/R_o=0.13 \text{ W/m}^2\text{K}$				

C107-3/2005- Tab II  
Mc001-PI- Tab. 5.3.2

- C** Light gauge steel profile, cold formed, made of galvanized steel sheet, straight section with “C” shape and cut edges.
- Type C12/41/89/12x1,0 - GK (SR EN 10162:2003)
- Galvanized steel DX51D + Z275 (EN 10346:2009)