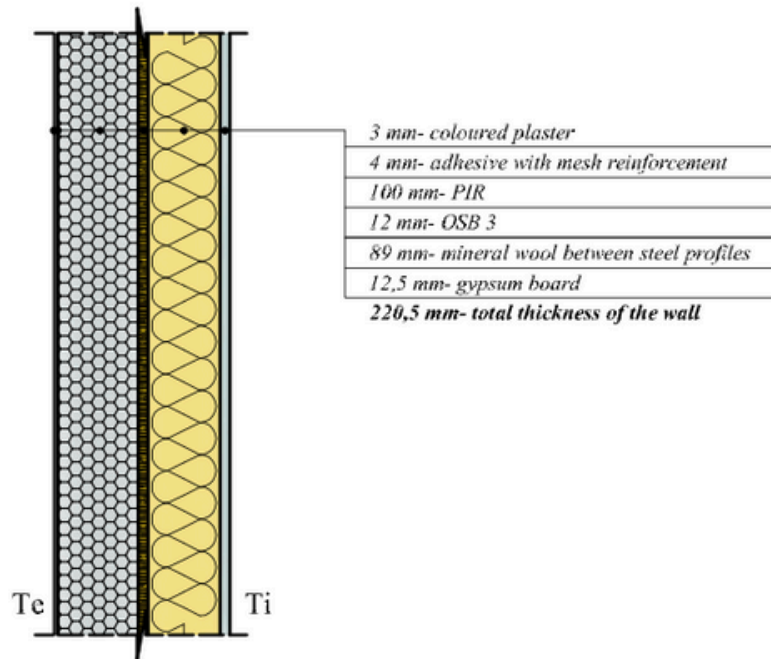


“Unic Rotarex® 100 PIR” wall



| Exterior PIR wall | | | | | | |
|-------------------------------|-------------------------------------|-----------------------------------|-----------|----------|------------|----------------------|
| Nr. Crt. | Material | δ | λ | α | λ' | R |
| | | [m] | [W/mK] | [-] | [W/mk] | [m ² K/W] |
| 1 | Gypsum board | 0.012 | 0.37 | 1.0 | 0.37 | 0.033 |
| 2 | Mineral wool between steel profiles | 0.089 | 0.078 | 1.0 | 0.041 | 1.141 |
| 3 | OSB 3 | 0.012 | 0.084 | 1.0 | 0.084 | 0.143 |
| 4 | PIR | 0.10 | 0.022 | 1.0 | 0.022 | 4.545 |
| 5 | Adhesive with mesh reinforcement | 0.004 | 0.7 | 1.0 | 0.7 | 0.006 |
| 5 | Coloured plaster | 0.003 | 0.7 | 1.0 | 0.7 | 0.004 |
| TOTAL | | | | | | 5.742 |
| $R_o=1/\alpha_i+R+1/\alpha_e$ | | | | | | 5.909 |
| Thermal transfer coefficient | | $U=1/R_o=0.17$ W/m ² K | | | | |

C Light gauge steel profile, cold formed, made of galvanized steel sheet, straight section with “C” shape and cut edges.
Type C12/41/89/12x1,0 - GK (SR EN 10162:2003)
Galvanized steel DX51D + Z275 (EN 10346:2009)