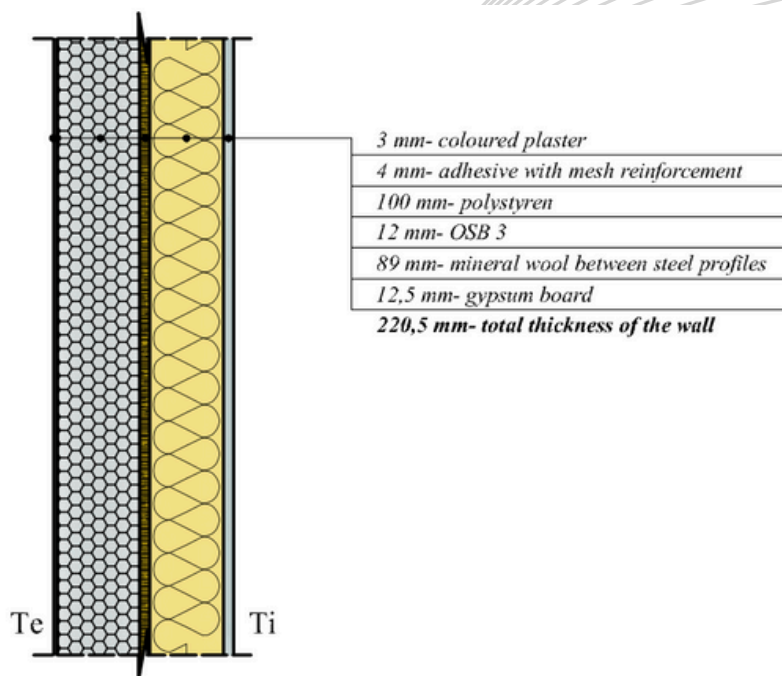


“Unic Rotarex® 100 Dalmatina” wall



Exterior Caparol Dalmatina wall						
Nr. Crt.	Material	δ	λ	α	λ'	R
		[m]	[W/mK]	[–]	[W/mk]	[m ² K/W]
1	Gypsum board	0.012	0.37	1.0	0.37	0.033
2	Mineral wool between steel profiles	0.089	0.078	1.0	0.041	1.141
3	OSB 3	0.012	0.084	1.0	0.084	0.143
4	Polystyren	0.10	0.033	1.0	0.044	3.03
5	Adhesive with mesh reinforcement	0.004	0.7	1.0	0.7	0.006
5	Coloured plaster	0.003	0.7	1.0	0.7	0.004
<i>TOTAL</i>						4.227
$R_o = 1/a_i + R + 1/a_e$						4.394
<i>Thermal transfer coefficient</i>		$U = 1/R_o = 0.23 \text{ W/m}^2\text{K}$				

C Light gauge steel profile, cold formed, made of galvanized steel sheet, straight section with “C” shape and cut edges.
Type C12/41/89/12x1,0 - GK (SR EN 10162:2003)
Galvanized steel DX51D + Z275 (EN 10346:2009)