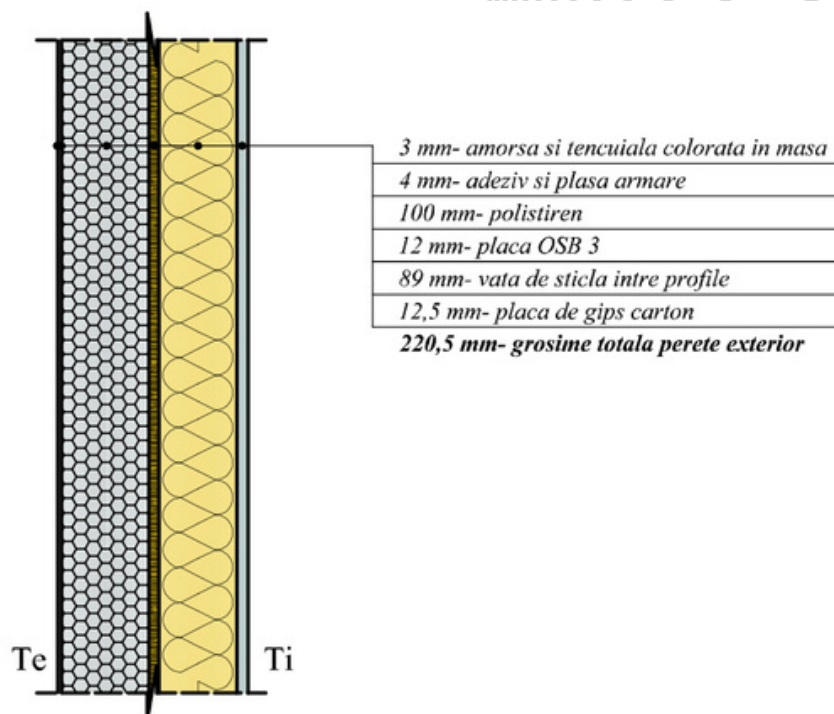


## Perete "Unic Rotarex® 100 Dalmatina"



Perete exterior - polistiren Caparol Dalmatina						
Nr. Crt.	Material	$\delta$	$\lambda$	$\alpha$	$\kappa'$	R
		[m]	[W/mK]	[-]	[W/mk]	[m <sup>2</sup> K/W]
1	Placa gips carton	0.012	0.37	1.0	0.37	0.033
2	Vata de sticla intre profile C	0.089	0.088	1.0	0.088	1.011
3	Placa OSB 3	0.012	0.084	1.0	0.084	0.143
4	Polistiren celular	0.10	0.033	1.0	0.033	3.030
5	Adeziv si plasa de armare	0.004	0.7	1.0	0.7	0.006
5	Tencuiala colorata in masa	0.003	0.7	1.0	0.7	0.004
TOTAL						4.227
$R_o = 1/a_i + R + 1/a_e$						4.394
Coeficient de transfer termic			$U = 1/R_o = 0.23 \text{ W/m}^2\text{K}$			

C107-3/2005- Tab II  
Mc001-P1- Tab. 5.3.2

- C** Profil cu pereti subtiri, format la rece, din tabla zincata, sectiune dreapta in forma de "C" cu marginile taiate.
- Tip C12/41/89/12x1,0 - GK (SR EN 10162:2003)
- Tabla zincata DX51D + Z275 (EN 10346:2009)