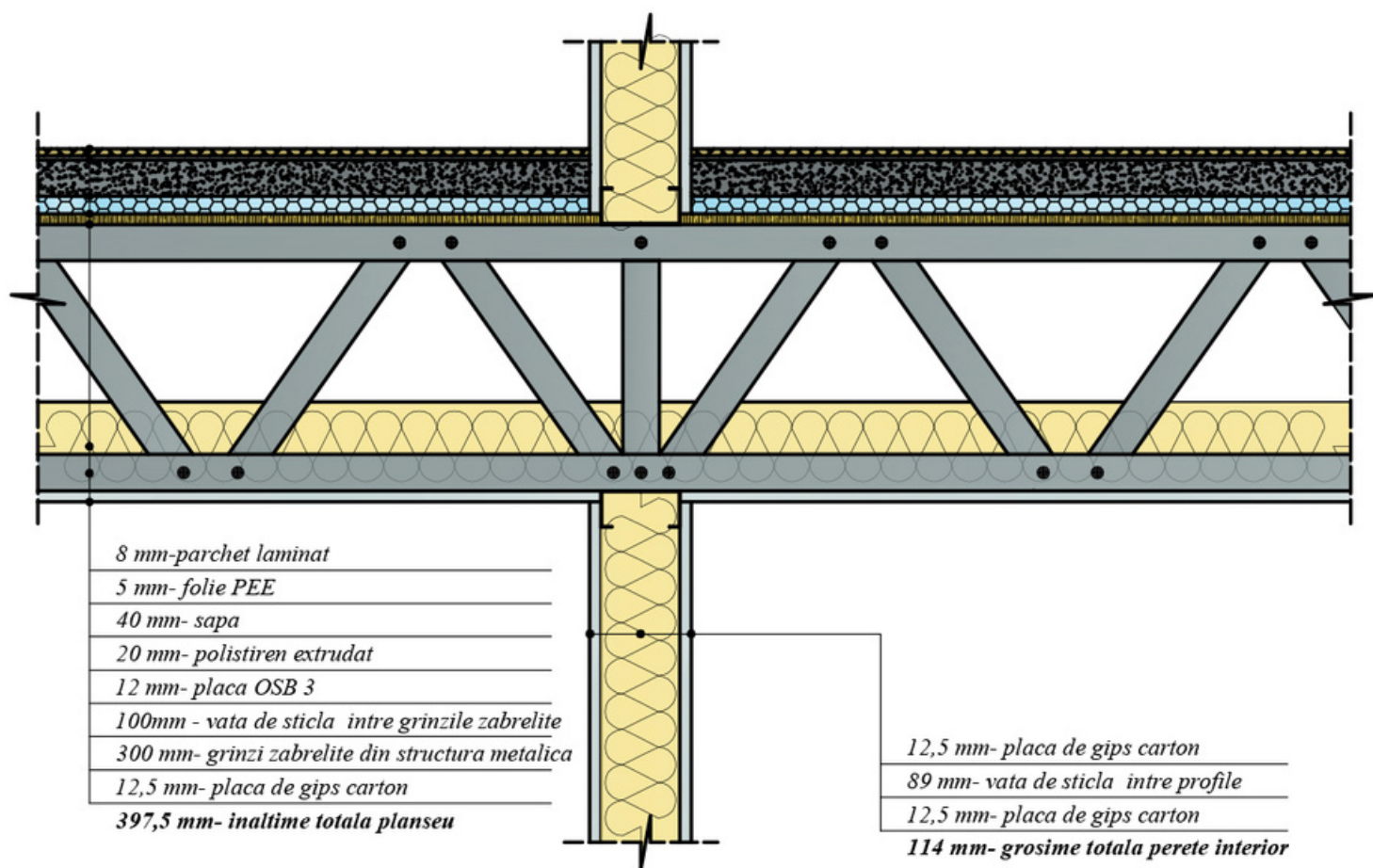


Sectiune planseu - structura metalica usoara



- C** Profil cu pereti subtiri, format la rece, din tabla zincata, sectiune dreapta in forma de “C” cu marginile taiate.
 Tip C12/41/89/12x1,0 - GK (SR EN 10162:2003)
 Tabla zincata DX51D + Z275 (EN 10346:2009)